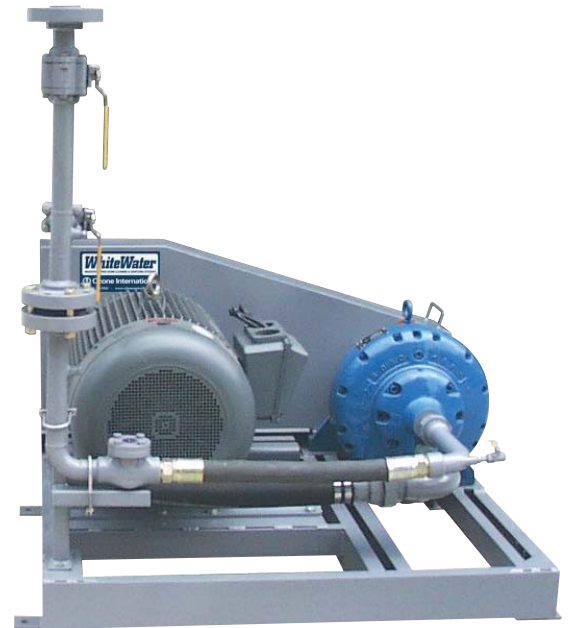


WhiteWater

PRODUCT
DATA SHEET
HP-700

INDUSTRY-PROVEN OZONE CLEANING & SANITIZING SYSTEMS

Flow Capacity	70 GPM @ 1500 PSI
Advanced Features	Efficient and reliable Roto-Jet pump Advanced PLC control and protection
Installation	Centralized
Electrical Requirement	480 VAC, 150 Amps with separate 115 VAC, 15 Amp Control Ckt.
Air Requirement	80 PSI @ 1 SCFM
Water Requirement	40 PSI @ 80 GPM
Water Connections	1.5" FPT Supply 2" FPT High pressure header
Dimensions	85"W x 134"L x 81"H
Weight	3000 lbs (empty), 11,340 lbs (full tank)



SYSTEM CAPABILITIES	DualStream™ High+Low Pressure Cleaning & Sanitizing	DualStream™ Spray Bar Treatable Belt Width	DualStream™ Spray Stations
	Light Soil Environments	✓ with C-500	333"
✓ with C-1000		333"	23
✓ with C-1500		333"	23
Heavy Soil Environments	✓ with C-500	333"	10
	✓ with C-1000	333"	10
	✓ with C-1500	333"	10

Instantaneous total flow demand by low pressure spray bars, low pressure spray stations, high+low pressure spray bars, and high+low pressure spray stations must not exceed system capacity. System capabilities can vary based on plant operating conditions, piping, spray nozzle selection/placement, and other factors.

Questions? Call (888) 780-5552 or visit www.o3international.com.



Ozone International
Industry-Proven Ozone Cleaning and Sanitizing Systems

Phone: (888) 780-5552
Fax: +1 (206) 780-5554
www.o3international.com