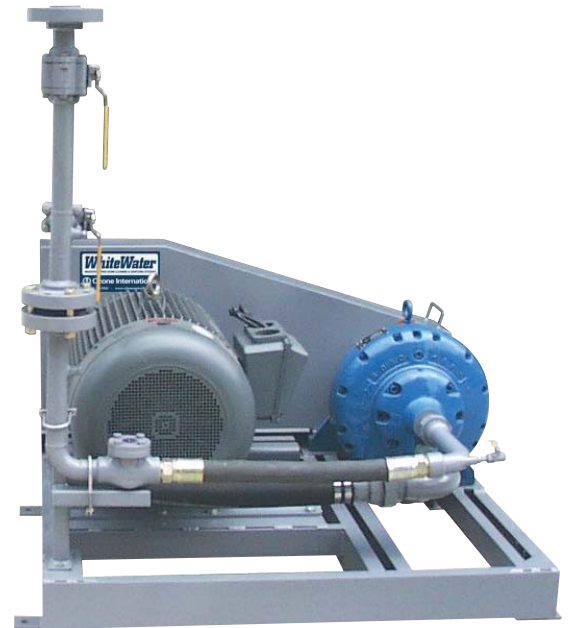


# WhiteWater

PRODUCT  
DATA SHEET  
HP-2200

INDUSTRY-PROVEN OZONE CLEANING & SANITIZING SYSTEMS

<b>Flow Capacity</b>	220 GPM @ 1500 PSI
<b>Advanced Features</b>	Efficient and reliable Roto-Jet pump Advanced PLC control and protection
<b>Installation</b>	Centralized
<b>Electrical Requirement</b>	480 VAC, 380 Amps with separate 115 VAC, 15 Amp Control Ckt.
<b>Water Requirement</b>	40 PSI @ 220 GPM
<b>Water Connections</b>	1.5" FPT Supply 2" FPT High pressure header
<b>Dimensions</b>	85"W x 210"L x 81"H
<b>Weight</b>	6150 lbs (empty), 14,500 lbs (full tank)



SYSTEM CAPABILITIES	DualStream™ High+Low Pressure Cleaning & Sanitizing	DualStream™ Spray Bar Treatable Belt Width	DualStream™ Spray Stations
	Light Soil Environments	✓ with C-1000	1,045"
✓ with C-1500		1,045"	58
Heavy Soil Environments	✓ with C-1000	1,045"	31
	✓ with C-1500	1,045"	31

Instantaneous total flow demand by low pressure spray bars, low pressure spray stations, high+low pressure spray bars, and high+low pressure spray stations must not exceed system capacity. System capabilities can vary based on plant operating conditions, piping, spray nozzle selection/placement, and other factors.

**Questions? Call (888) 780-5552 or visit [www.o3international.com](http://www.o3international.com).**



**Ozone International**  
Industry-Proven Ozone Cleaning and Sanitizing Systems

Phone: (888) 780-5552  
Fax: +1 (206) 780-5554  
[www.o3international.com](http://www.o3international.com)